

被釉绕线电阻(Vitreous Enamelled Wire Wound Resistors)DRBY/DSBY 8W-500W

大功率、高稳定、散热快、防潮性非常好的一款产品；
High Power, High Stability, Fast Heat Dissipation, Moisture resistance



■ 结构 (Structure)

- 1.被釉电阻的电阻丝材料选用耐高温、电气性能稳定、温漂系数小的铁铬铝、镍铬丝或康铜丝制作。
The resistor wire is made of iron chromium aluminum, nickel chromium wire or constantan wire, with high temperature resistance, stable electrical performance and low temperature drift coefficient.
- 2.采用含铝量75陶瓷作为绕线基体，具有较高的散热性。
Ceramic Tube(aluminum content 75) used as the winding matrix, with high heat dissipation.
- 3.表层被釉绿色。
Surface Colour :enamel green.

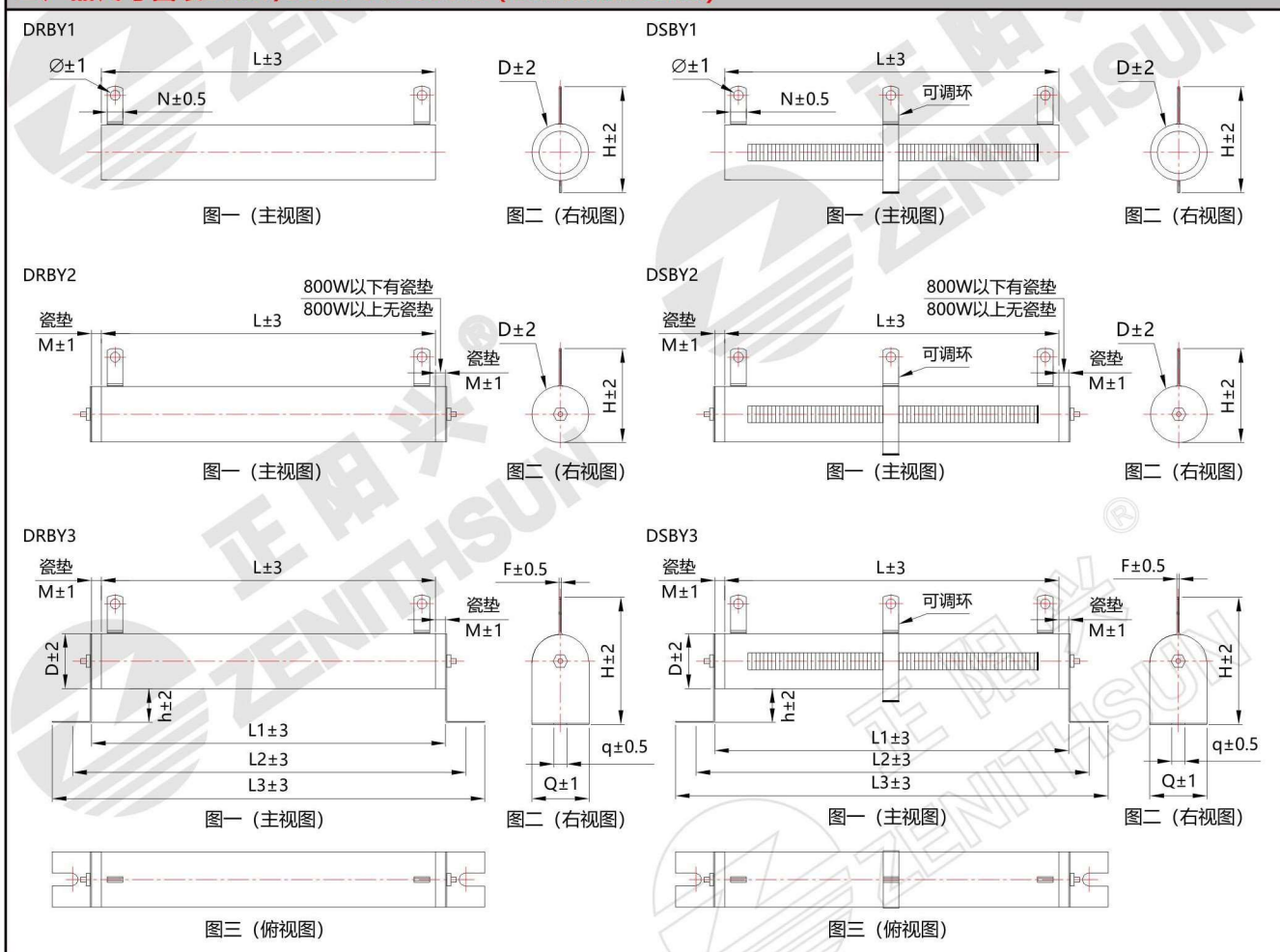
■ 特点(Features)

- 1.被釉电阻包括DRBY固定被釉绕线电阻和DSBY可调被釉绕线电阻，被釉绕线电阻顾名思义表层被釉,产品结构坚固、抗污染性强、耐化学气体侵蚀、绝缘度高，耐湿耐高温，可在恶劣环境下使用。
Fixed Type or Variable Type are available. The surface layer is enamel, with firm structure, strong pollution resistance, chemical gas erosion resistance, high insulation, moisture resistance & high temperature resistance, used in harsh environments.
- 2.功率范围:8W-500W
Power Range:8W-500W
- 3.具有高功率、耐冲击、快散热、高稳定、寿命长、防潮性好等特点。
High power, shock resistance, fast heat dissipation, high stability, long life & good moisture resistance.
- 4.引出端采用端片式引出。
Taps/Terminals leading out for bolts/wire connection.

■ 适用范围 (Application)

深圳市正阳兴电子的系列绕线电阻生产周期为3-4周，广泛用于工控、伺服及高要求高恶劣环境。
Production Time : 2-3 weeks.
Widely used in Industrial control, servo and harsh environment.

■ 产品尺寸图表DRBY/DSBY 8W-500W (Dimension Chart)



功率 Power	阻值范围 Resistance Range	精度 Tolerance	温度系数 T.C.R	尺寸 Dimensions(mm)													净重(g) N.W
				D	L	d	H	h	L1	L2	L3	N	Φ	q	Q	M	
8W	2.7Ω-3KΩ	K(±10%) J(±5%) G(±2%) F(±1%)	±100PPM	14	35	5.5	31	13	/	/	/	4.5	2	/	/	/	35
10W	2.7Ω-3KΩ			14	41	5.5	31	13	/	/	/	4.5	2	/	/	/	38
16W	3.3Ω-5.1KΩ			17	51	8	34	13	57	71	90	4.5	2	4.5	15	3.5	45
20W	3.3Ω-5.1KΩ			17	51	8	34	13	57	71	90	4.5	2	4.5	15	3.5	45
25W	3.3Ω-5.1KΩ			21	51	11	39	13	60	80	100	4.5	2	5	20	5	50
30W	4.7Ω-6.8KΩ			21	71	11	39	13	80	100	120	4.5	2	5	20	5	65
40W	4.7Ω-6.8KΩ			21	87	11	39	13	97	115	137	4.5	2	5	20	5	80
50W	4.7Ω-6.8KΩ			29	91	20	42	13	101	122	143	6	3	6	28	5.5	115
80W	4.7Ω-6.8KΩ			29	140	20	42	13	151	172	193	6	3	6	28	5.5	180
100W	4.7Ω-10KΩ			29	170	20	42	13	181	202	223	6	3	6	28	5.5	275
100Ws	4.7Ω-10KΩ		±400PPM	19	165	12	36	15	176	195	215	6.5	4	5	20	5.5	150
150W	4.7Ω-10KΩ			29	215	20	42	13	226	247	268	6	3	6	28	5.5	350
200W	4.7Ω-10KΩ			29	267	20	42	13	278	299	320	6	3	6	28	5.5	435
250W	4.7Ω-10KΩ			29	267	20	42	13	278	299	320	6	3	6	28	5.5	435
300W	5.1Ω-10KΩ			36	266	20	58.5	11	279	305	343	9	4	6	40	6	540
400W	5.1Ω-10KΩ			54	250	30	76.5	17	267	290	335	16	8	6	50	8.5	810
500W	5.1Ω-10KΩ			54	300	30	76.5	17	317	340	385	16	8	8	50	8.5	980

备注：如有特殊要求或者参数超出以上标准可协商供货
Note: other on requests are available

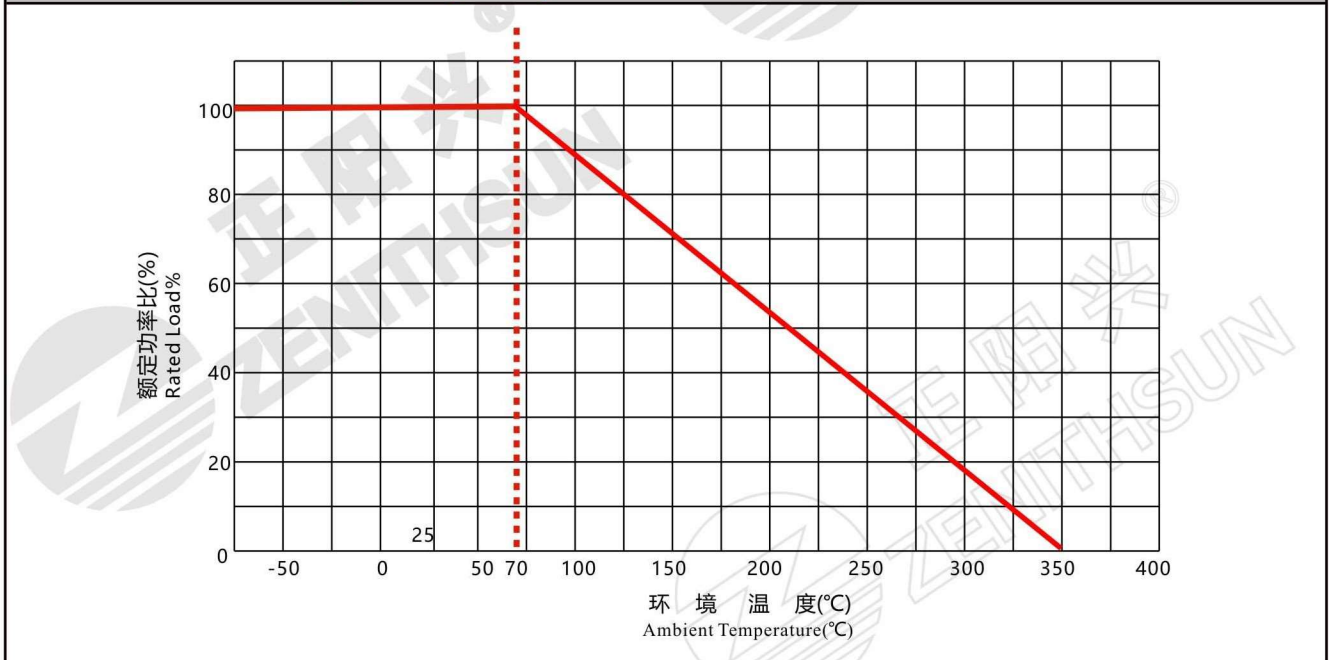
■ 定货示例 (How to order)

DRBY3	25W	100R	J	N
↓	↓	↓	↓	↓
型号	功率	标称阻值	精度 (K:±10%, J:±5%, G:±2%, F:±1%)	无感 (有感不标注)
Type	Power	Nominal value	Tolerance(K:±10%, J:±5%, G:±2%, F:±1%)	Non Inductive Resistor (to specify add N)

04

■ 绕线电阻性能实验参数 (Performance Characteristics)		
项目 Test	试验条件 Conditions of Test	性能要求 Testing Results
电阻值容许误差 Resistance Tolerance	测试电压≤3V,环境温度25°C Testing Voltage ≤3V, Ambient Temperature 25°C	F---G---J--K
温度系数 T.C.R	$\frac{R1-R0}{R0(T1-T0)} \times 10^6$ (PPM/°C) R0:常温(T0)下阻值 R0:Room Temperature(T0)Resistance R1:常温T0+100°C(T1)下阻值 R1:Room Temperature T0+100°C(T1)Resistance	±200PPM~ ±400PPM
额定负荷 Rated Load	40°C额定电压, 1小时 40°C, rated voltage, 1 hour	$\Delta R \leq \pm(3\%R + 0.1\Omega)$
短时间过负荷 Short Time Overload	5倍额定功率, 10秒钟; 10倍额定功率 5秒; 25倍额定功率 1秒 5 times rated power for 10s; 10 times rated power for 5s; 25 times rated power for 1s	$\Delta R \leq \pm(2\%R + 0.1\Omega)$
引出端对地绝缘耐压 Dielectric Withstand Voltage	1KV-6KVac 60秒,漏电流2.5mA 1KV-6KVac 60s, leakage current 2.5mA	$\Delta R \leq \pm(0.1\%R + 0.05\Omega)$
绝缘电阻值 Insulation Resistance	500VDC	≥100MΩ1Min
引出端强度 Terminal Tensile Strength	40N	无脱落 No off
耐振性 Vibration resistance	1.5mm,10-55-10Hz, 分别2小时 1.5mm,10-55-10Hz,each 2hours	无破损, 无脱落 No damage, No off
室温耐久性 Load Life	额定电压, 通电90分钟, 停30分钟, 共500小时 At rated voltage, 90 min "On", 30 min "Off", total 500hours	$\Delta R \leq \pm(3\%R + 0.1\Omega)$
耐低温试验 Low Temp. Resistance	产品在-55°C±2°C环境条件下储存16H后, 接入额定电压直流回路持续1秒 Store at -55°C ± 2°C for 16h, connect the rated voltage DC circuit for 1s	$\Delta R \leq \pm(1\%R + 0.1\Omega)$
耐高温试验 High Temp. Resistance	产品在70°C±2°C环境条件下储存16H后, 接入额定电压直流回路持续1秒 Store at 70°C ± 2°C for 16h, connect the rated voltage DC circuit for 1s	$\Delta R \leq \pm(1\%R + 0.1\Omega)$
不燃性 Non-flammability	10倍额定功率, 通电5分钟 10 times rated power, power on for 5Min	允许开路, 但不燃烧 Without combustion

■ 绕线电阻降功耗曲线图 (Derating Curve)



电阻产品体系图>>>

铝壳电阻ASZ



铝壳电阻ASCB



铝壳电阻RH/NH,ASC



高压电阻R180



电阻产品体系图>>>

厚膜电阻ZMP/RI82/RF82



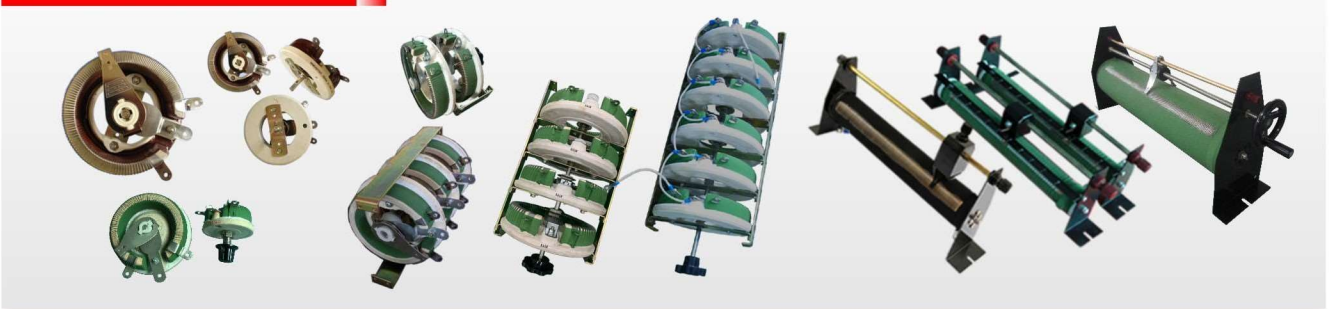
水冷电阻SLR



绕线电阻DDR/DNR, DQR/DQN, DSR, DRBY/DSBY



滑动电阻DSY、DST、BC1



电阻产品体系图>>>

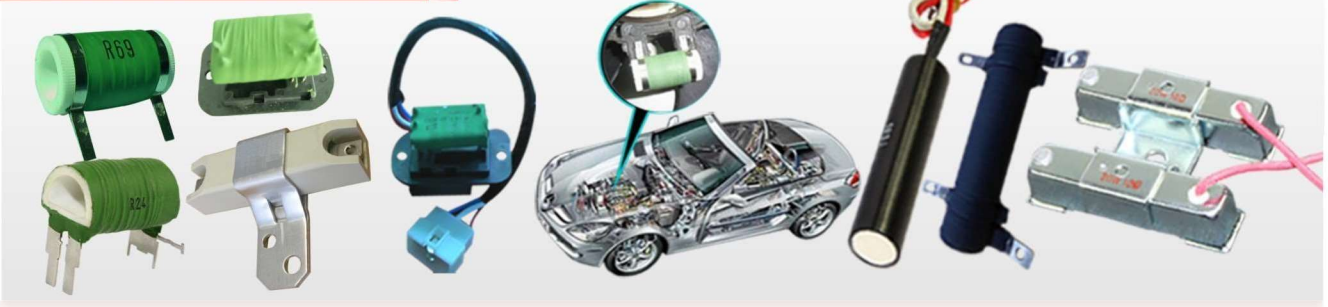
板型电阻ZB



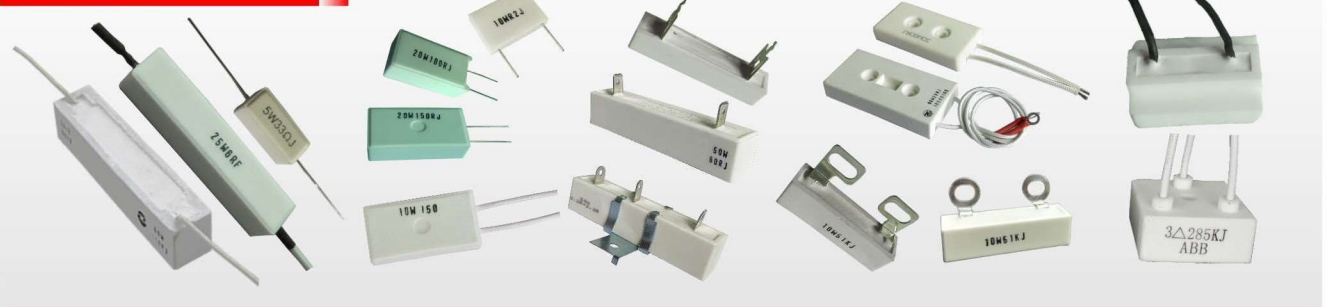
高能电阻HD



汽车电阻DQTS/摩托车电阻TWS

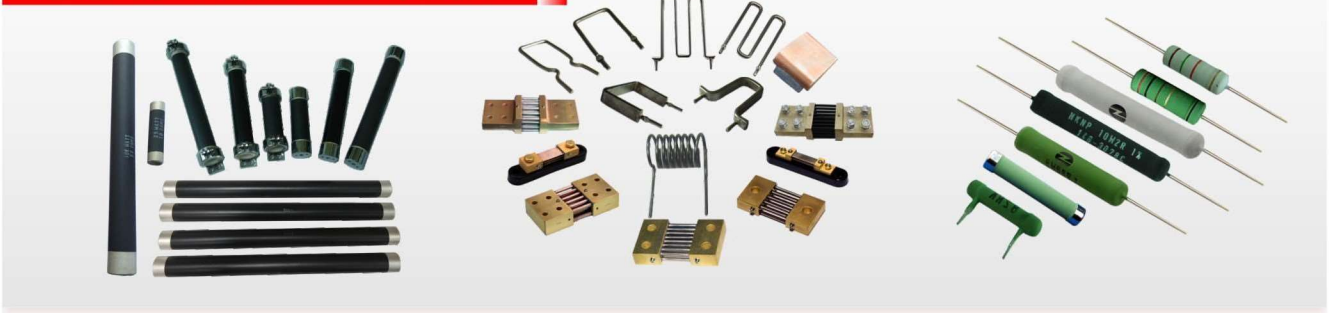


水泥电阻SR



电阻产品体系图>>>

碳膜高压电阻PC/分流器FL/瓷棒绕线电阻KN



无极可调电阻箱DSYB、DSTB、BC1B



不锈钢电阻BXG



风冷阻负载DRLB/水冷负载SRLB

